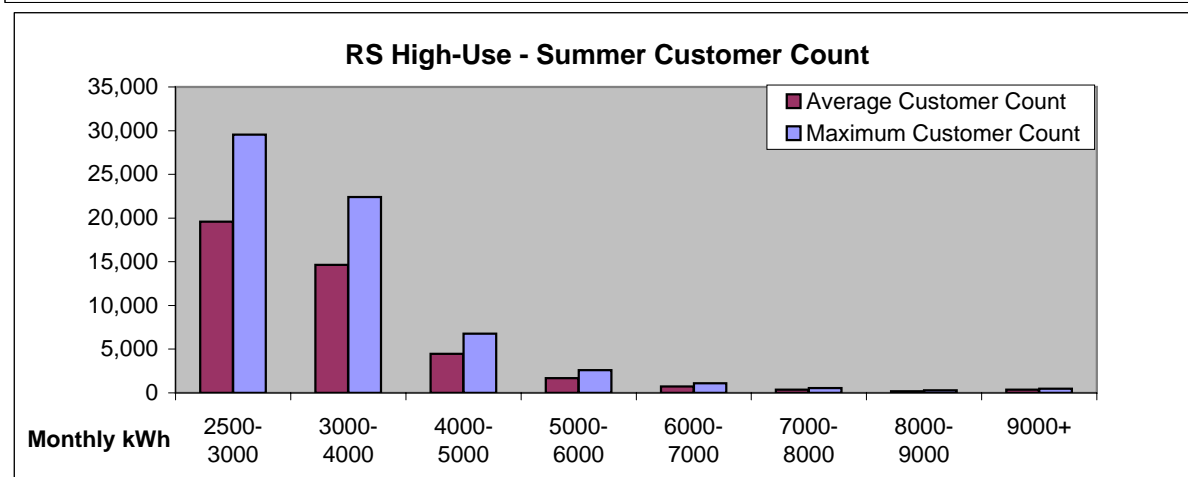
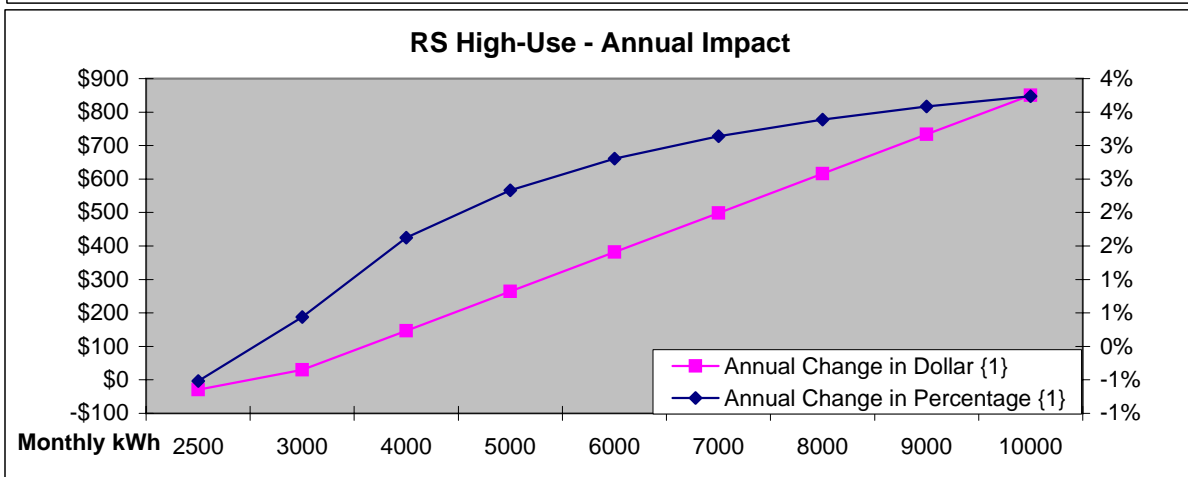
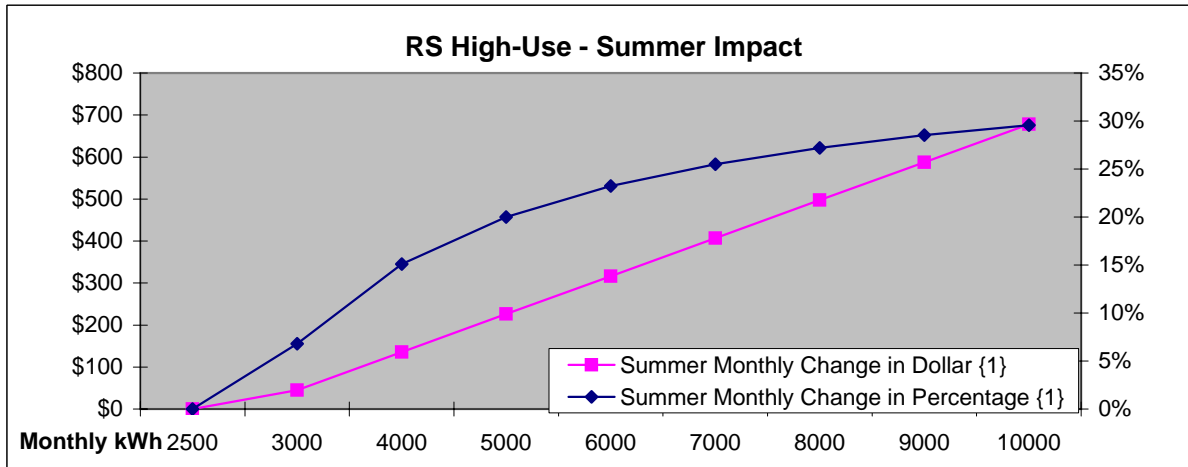
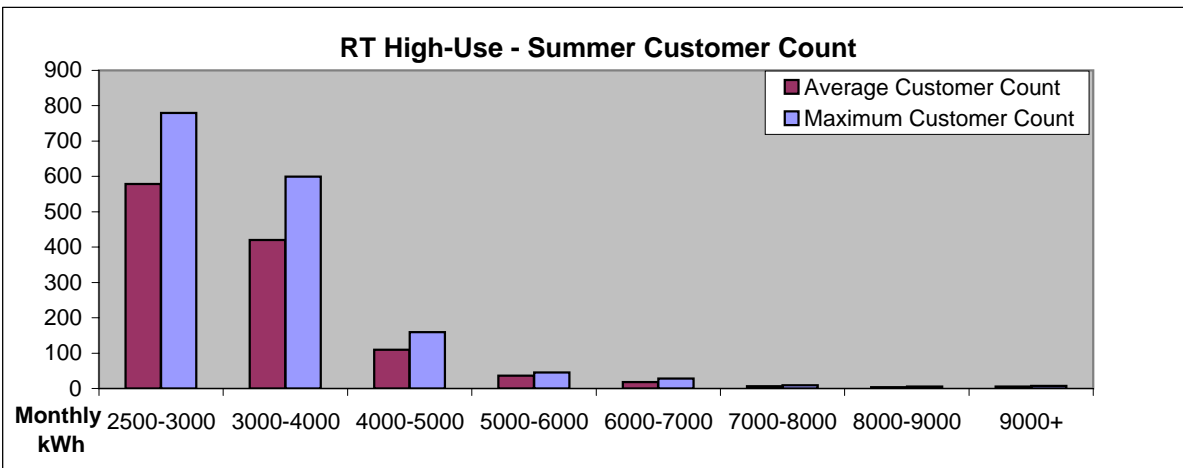
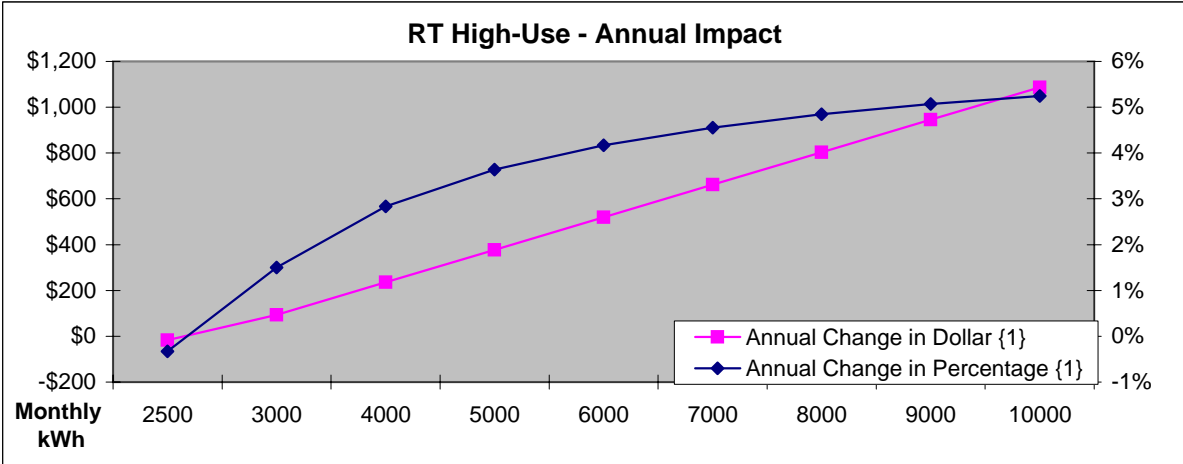
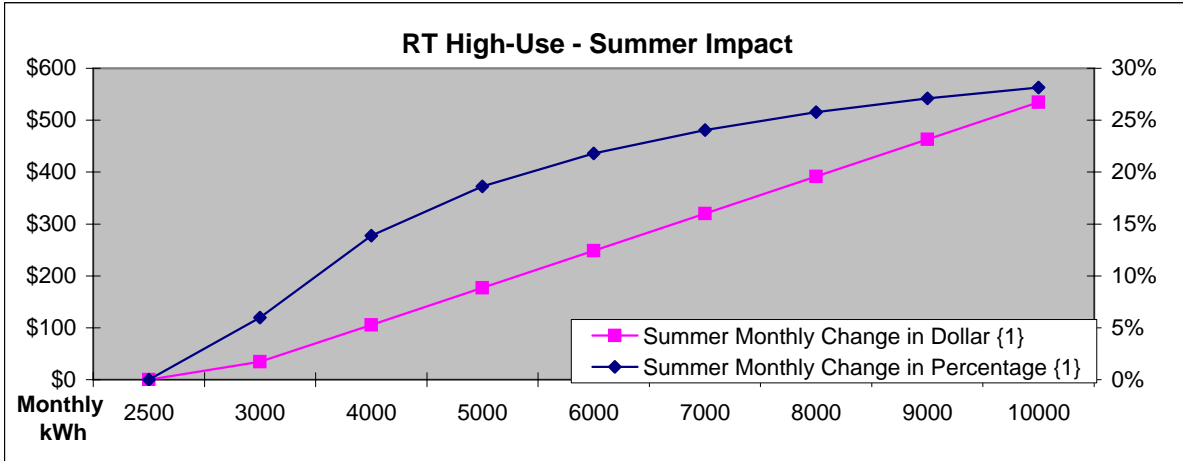


Monthly Usage	Summer Monthly Change in Dollar {1}	Summer Monthly Change in Percentage {1}	Annual Change in Dollar {1}	Annual Change in Percentage {1}	Monthly Usage	Average Customer Count	Maximum Customer Count
2500	\$0	0%	-\$29	-1%	2500-3000	19599	29544
3000	\$45	7%	\$30	0%	3000-4000	14662	22414
4000	\$136	15%	\$147	2%	4000-5000	4456	6788
5000	\$226	20%	\$264	2%	5000-6000	1679	2583
6000	\$316	23%	\$381	3%	6000-7000	743	1086
7000	\$407	26%	\$499	3%	7000-8000	368	545
8000	\$497	27%	\$616	3%	8000-9000	197	300
9000	\$588	29%	\$733	4%	9000+	351	492
10000	\$678	30%	\$851	4%			



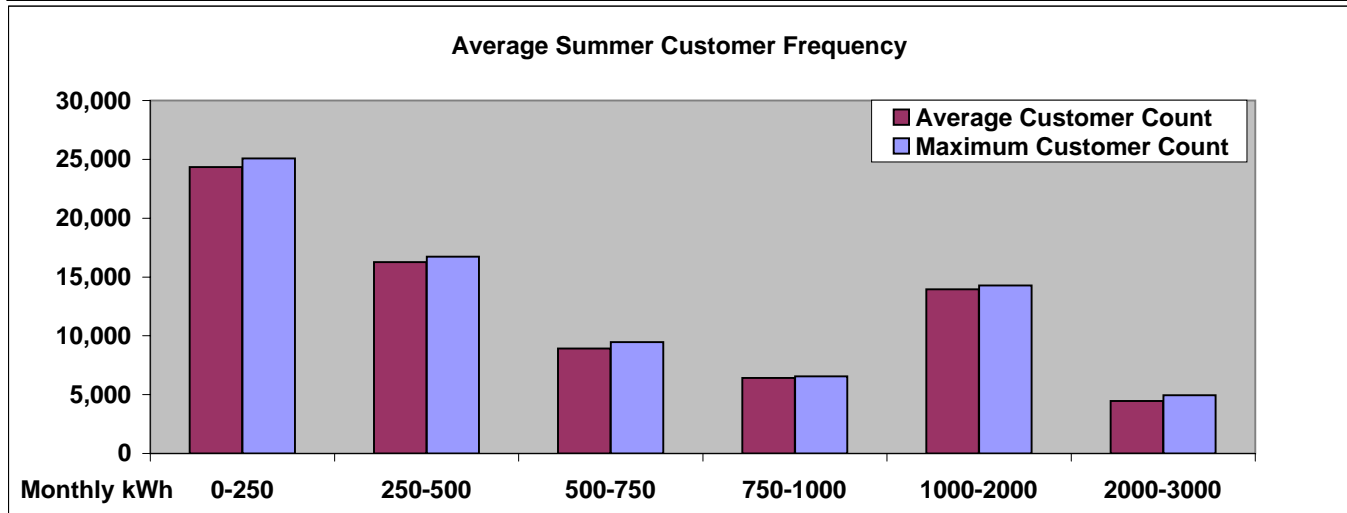
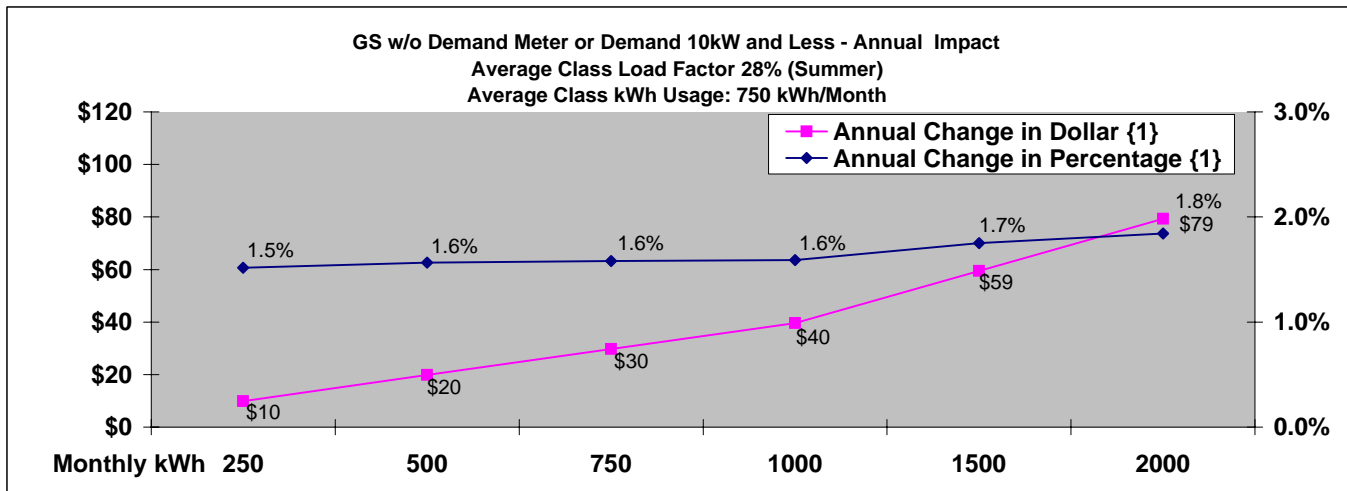
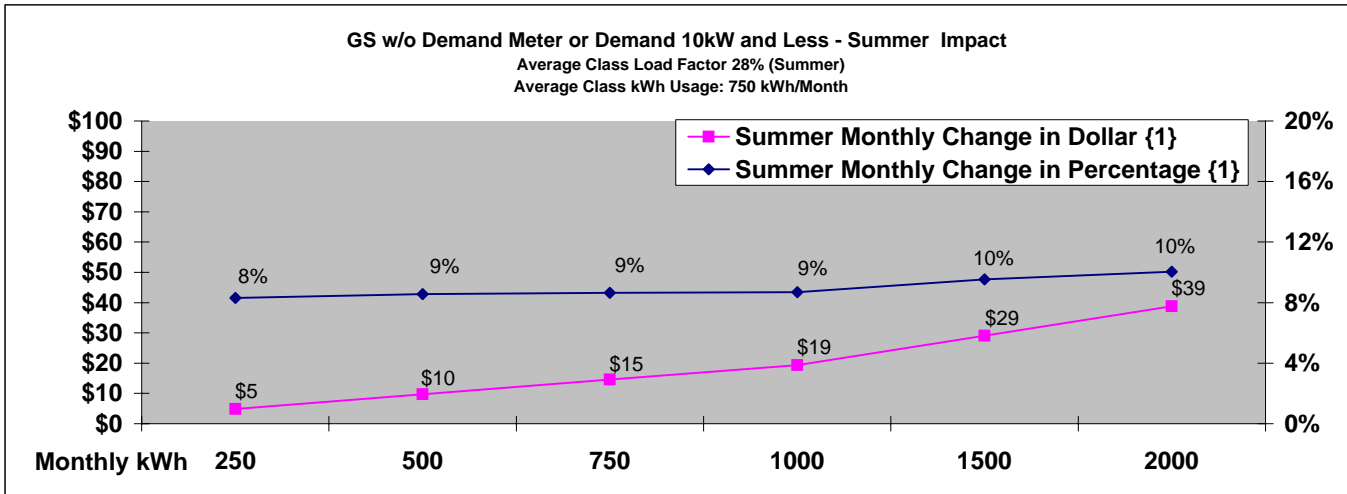
{1} Based on rates in effect 6/1/2008

Monthly Usage	Summer Monthly Change in Dollar {1}	Summer Monthly Change in Percentage {1}	Annual Change in Dollar {1}	Change in Percentage {1}	Monthly Usage	Average Customer Count	Maximum Customer Count
2500	\$0	0%	-\$17	0%	2500-3000	579	780
3000	\$34	6%	\$94	2%	3000-4000	420	599
4000	\$106	14%	\$236	3%	4000-5000	110	159
5000	\$177	19%	\$378	4%	5000-6000	36	45
6000	\$249	22%	\$520	4%	6000-7000	18	28
7000	\$320	24%	\$661	5%	7000-8000	7	9
8000	\$392	26%	\$803	5%	8000-9000	4	5
9000	\$463	27%	\$945	5%	9000+	5	7
10000	\$534	28%	\$1,087	5%			



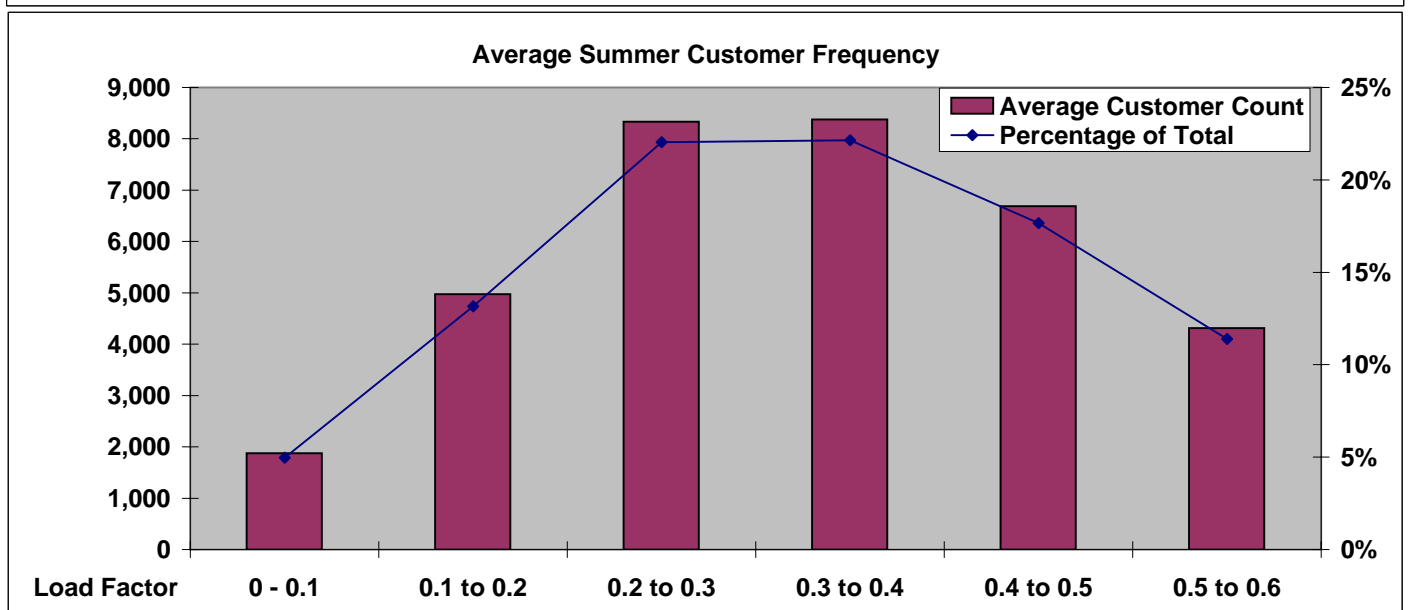
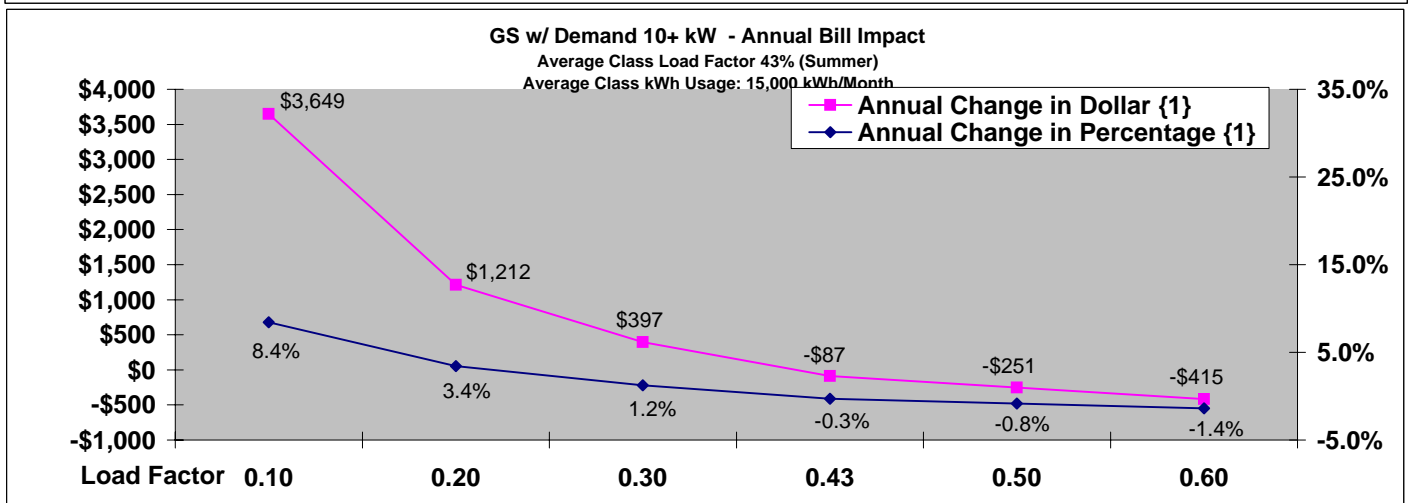
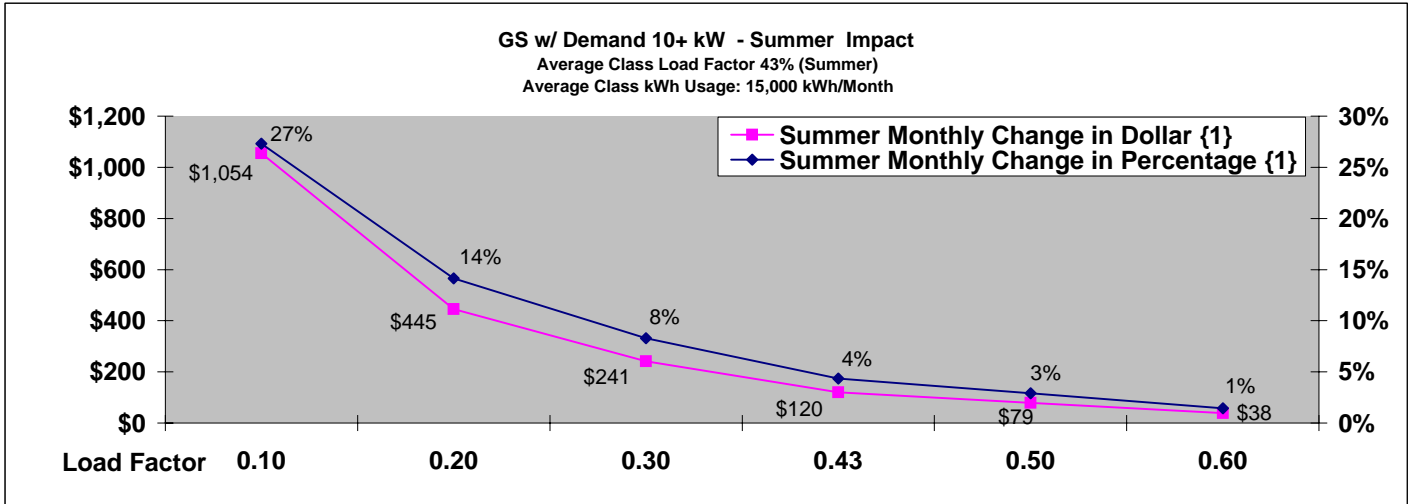
{1} Based on rates in effect 6/1/2008

Monthly KWh	Summer Monthly Change in Dollar {1}	Summer Monthly Change in Percentage {1}	Annual Change in Dollar {1}	Annual Change in Percentage {1}	Monthly kWh	Average Customer Count	Maximum Customer Count
250	\$5	8%	\$10	1.5%	0-250	24,335	25,085
500	\$10	9%	\$20	1.6%	250-500	16,263	16,722
750	\$15	9%	\$30	1.6%	500-750	8,917	9,454
1000	\$19	9%	\$40	1.6%	750-1000	6,411	6,567
1500	\$29	10%	\$59	1.7%	1000-2000	13,952	14,273
2000	\$39	10%	\$79	1.8%	2000-3000	4,460	4,957



{1} Based on rates In effect 6/1/2008

LF	Summer Monthly Change in Dollar {1}	Summer Monthly Change in Percentage {1}	Annual Change in Dollar {1}	Annual Change in Percentage {1}	LF	Average Customer Count	Percentage of Total
0.10	\$1,054	27%	\$3,649	8.4%	0 - 0.1	1,876	5%
0.20	\$445	14%	\$1,212	3.4%	0.1 to 0.2	4,974	13%
0.30	\$241	8%	\$397	1.2%	0.2 to 0.3	8,333	22%
0.43	\$120	4%	-\$87	-0.3%	0.3 to 0.4	8,380	22%
0.50	\$79	3%	-\$251	-0.8%	0.4 to 0.5	6,686	18%
0.60	\$38	1%	-\$415	-1.4%	0.5 to 0.6	4,315	11%



{1} Based on rates in effect 6/1/2008